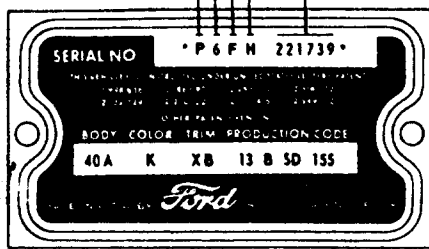


1955, 1956 & EARLY 1957 DATA PLATE

ASSEMBLY PLANT (Dearborn) MODEL YEAR (1956) ENGINE CODE (292 c.i.) BODY STYLE (Thunderbird) CONSECUTIVE UNIT NO. (All Ford cars assembled)



40A K X B 13 B S D 155
 BODY TYPE² BODY COLOR (Fiesta Red)³ TRIM COLOR (Red & White) SCHEDULED ITEM NO.⁴ DEALER CODE⁵ MONTH (February) DAY OF THE MONTH

- ¹ Either 193 HP w 3-speed transmission, or 198 HP w Fordomatic or overdrive
² All '55 & '56 models were coded 40A, whereas all '57 models were coded 40.
³ Body color and hard top. If a second letter shows, it indicates a different color for the hard top.
⁴ 155th automobile (not only Thunderbirds) scheduled to be assembled on 2/13/56.
⁵ SD signifies a Boston, Mass. dealer ordered this particular car.

DISTRICT CODES

SALES AREA CODES (The letters and numbers never used together) WERE AS FOLLOWS:

11/SD	Boston	45/DQ	Davenport
12/BF	Buffalo	51/DN	Denver
13/BX	New York	52/DS	Des Moines
14/PI	Pittsburgh	53/KS	Kansas City
15	Newark	54/NB	Omaha
21/NK	Atlanta	55/SL	Saint Louis
22/CE	Charlotte	61/DP	Dallas
23/DI	Philadelphia	62/SU	Houston
24/KJ	Jacksonville	63/GB	Memphis
25/RP	Richmond	64/NR	New Orleans
26/DC	Washington, D.C.	65/KL	Oklahoma City
31/CI	Cincinnati	71/LP	Los Angeles
32/CL	Cleveland	72/SK	San Jose
33/DD	Detroit	73/SC	Salt Lake City
34/NP	Indianapolis	74/SE	Seattle
35/LX	Louisville	82/EX	FMC Export Operations, New Jersey
41/CX	Chicago		
42/RG	Fargo	84/HO	FMC Transportation and Equipment Department

* The last series of numbers denotes the "Scheduled Item Number," again with the exception of late 1957 models. The scheduled item number is a number that is assigned to the body from the Assembly Plant. This means that in the case of our 1957 example (28J320015C), this Thunderbird was the 15th unit scheduled for assembly on September 28, 1956 (counting Ford cars and Thunderbirds). It does not necessarily mean it was the 15th Thunderbird assembled that day by any means!

EXTERIOR PAINT

- 1955- A = Raven Black; E = Snowshoe White; R = Torch Red; T = Thunderbird Blue; V = Goldenrod Yellow.
 1956- A = Raven Black; E = Colonial White; J = Buckskin Tan; K = Fiesta Red; L = Peacock Blue; M = Goldenrod Yellow; X = Navajo Gray; Y = Sunset Coral; Z = Thunderbird Green; T = T-Bird Grey.
 1957- A = Raven Black; E = Colonial White; F = Starmist Blue; J = Willow Green; N = Gunmetal Gray; Q = Thunderbird Bronze; V = Flame Red; X = Dusk Rose; Y = Inca Gold; Z = Gold Sand.
 1958- Colors added or substituted for 1957 colors when 1957 Birds were being built with 1958 Fords; G = Sun Gold; R = Torch Red; L = Azure Blue; H = Gunmetal Gray; N = Seaspray Green. Some 1957 Thunderbirds had a trim deviation number after the color code. Example: LL6. This late color deviation is not 100% accurate, and should be considered only as information showing a very late car.

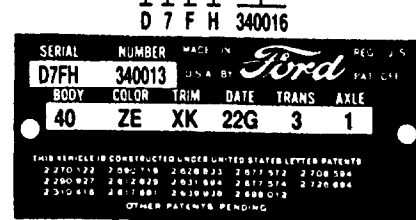
ENGINE CODES

Year	Code	Eng. Carb.	Transmission	HP
1955	P	292	4V 3-speed	193
	P	292	4V Fordomatic	198
	P	292	4V Overdrive	198
1956	M	292	4V 3-speed	202
	P	312	4V Overdrive	215
	P	312	4V Fordomatic	225
	P	312	8V 3-sp or OD	260
1957	C	292	2V 3-speed	212
	D	312	4V Fdmtc or OD	245
	E	312	8V any	270
	F	312	4V any	*300

*Supercharged

LATE 1957 DATA PLATE (From Approximately 4-12-57)

ASSEMBLY PLANT (Dearborn) MODEL YEAR (1957) ENGINE CODE¹ BODY STYLE (Thunderbird) CONSECUTIVE UNIT NO. (All Ford cars assembled)



40 ZE XK 22G 3 1
 BODY TYPE (Thunderbird) BODY COLOR (Coral Sand-Body, White-Top) TRIM COLOR (White) REAR AXLE RATIO TRANSMISSION² DAY OF THE MONTH (22) MONTH (July)

- ¹ 8 cyl. OHV Engine - 312 c.i. disp. - 4-venturi carb.
² Fordomatic transmission

FIRST & LAST T-BIRD NUMBERS (INTERMIXED WITH PASSENGER CARS)

1955		1956		1957	
DATE	NUMBER	DATE	NUMBER	DATE	NUMBER
9-9-54	P5FH 100005	10-17-55	P6FH 102661	9-14-56	D7FH 100010
9-14-55	P5FH 260557	8-24-56	P6FH 359516	12-13-57	E7FH 395813
Total	(T-Birds) 16,155	Total	(T-Birds) 15,631	Total	(T-Birds) 21,380

MONTHS OF THE YEAR CODES

YEAR		YEAR		YEAR	
MONTH	First Second	MONTH	First Second	MONTH	First Second
January	A N	May	E S	September	J W
February	B P	June	F T	October	K X
March	C Q	July	G U	November	L Y
April	D R	August	H V	December	M Z

INTERIOR TRIM

THUNDERBIRD - 1955	
A or	XA Black or White
B or	XB Red and White
C or	XC Turquoise and White
D or	XD Black and Yellow
THUNDERBIRDS - 1956	
XA	Black and White Vinyl
XB	Red and White Vinyl
XC	Dark Peacock and White Vinyl
XF	Green and White Vinyl
XG	Brown and White Vinyl
THUNDERBIRDS - 1957	
XA	Pleated Raven Vinyl and Pleated Colonial Vinyl
XH	Pleated Flame Vinyl
XJ	Pleated Bronze Vinyl
XK	Pleated Colonial Vinyl
XL	Pleated Dresden Vinyl and Pleated Starmist Vinyl
XM	Pleated Cumberland Vinyl and Pleated Willow Vinyl

TRANSMISSION TYPE CODES

CODE	TRANSMISSION	(SHOWS ON LATE 1957 TYPE DATA PLATES ONLY)
1	3 Speed Manual Shift	
2	Overdrive	
3	Fordomatic (2-speed)	